

Company Update

11:00 a.m. ET, March 23, 2026



NYSE, TSX: CDE

> Cautionary Statements

This presentation contains forward-looking statements within the meaning of securities legislation in the United States and Canada, relating to our mining business, including statements regarding the acquisition of New Gold and the integration of the New Afton and Rainy River mines, anticipated mineral reserve and resource estimates, exploration efforts and expenditures, development and expansion initiatives, growth, expansion, and upgrade or conversion, estimated production, costs, capital expenditures, expenses, recoveries, metals prices, integration of acquisitions, sufficiency of assets, ability to discharge liabilities, liquidity management, financing needs, environmental compliance expenditures, sustainability and human capital management initiatives, risk management strategies, including hedging, capital resources and use, cash flow maximization, mine life and other strategic initiatives. Such forward-looking statements involve known and unknown risks, uncertainties and other factors which may cause Coeur's actual results, performance or achievements to be materially different from any future results, performance or achievements expressed or implied by the forward-looking statements. Such factors include, among others, the risk that anticipated additions or upgrades to reserves and resources are not attained, the risk that planned exploration programs may be curtailed or canceled due to budget constraints or other reasons, the risks and hazards inherent in the mining business (including risks inherent in developing large-scale mining projects, environmental hazards, industrial accidents, weather or geologically related conditions), changes in the market prices of gold, silver, copper, zinc and lead and a sustained lower price environment, the uncertainties inherent in Coeur's production, exploratory and developmental activities, including risks relating to permitting and regulatory delays, ground conditions, grade and recovery variability, any future labor disputes or work stoppages, the uncertainties inherent in the estimation of mineral reserves and mineral resources, the potential effects of pandemics or epidemics, including impacts to the availability of our workforce, continued access to financing sources, government orders that may require temporary suspension of operations at one or more of our sites and effects on our suppliers or the refiners and smelters to whom the Company markets its production, changes that could result from Coeur's future acquisition of new mining properties or businesses, the loss of any third-party smelter to which Coeur markets its production, the effects of environmental and other governmental regulations and government shut-downs, the risks inherent in the ownership or operation of or investment in mining properties or businesses in foreign countries, the ability to maintain positive relationships with community stakeholders, inflationary pressures and impacts from tariffs and other trade barriers, Coeur's ability to raise additional financing necessary to conduct its business, make payments or refinance its debt, as well as other uncertainties and risk factors set out in filings made from time to time with the United States Securities and Exchange Commission, and the Canadian securities regulators, including, without limitation, Coeur's most recent report on Form 10-K. Actual results, developments and timetables could vary significantly from the estimates presented. Readers are cautioned not to put undue reliance on forward-looking statements. Coeur disclaims any intent or obligation to update publicly such forward-looking statements, whether as a result of new information, future events or otherwise. Additionally, Coeur undertakes no obligation to comment on analyses, expectations or statements made by third parties in respect of Coeur, its financial or operating results or its securities.

The scientific and technical information concerning our mineral projects in this presentation have been reviewed and approved by a "qualified person" under Item 1300 of Regulation S-K under the Securities Exchange Act of 1934, as amended ("SK 1300"), namely our Senior Vice President, Technical Services, Christopher Pascoe. For a description of the key assumptions, parameters and methods used to estimate mineral reserves and mineral resources for Coeur's material properties included in this presentation, as well as data verification procedures and a general discussion of the extent to which the estimates may be affected by any known environmental, permitting, legal, title, taxation, sociopolitical, marketing or other relevant factors, please review the Technical Report Summaries for each of the Company's material properties which are available at www.sec.gov. 2025 reserves and resources were determined by Coeur in accordance with Item 1300 of SEC Regulation S-K. 2024 reserves and resources for the New Afton and Rainy River mines were determined by New Gold in accordance with the Canadian National Instrument 43-101. Both sets of reporting standards have similar goals in terms of conveying an appropriate level of confidence in the disclosures being reported, but the standards embody slightly different approaches and definitions. The ranges of potential tonnage and grade (or quality) of the exploration results described in this presentation are conceptual in nature. There has been insufficient exploration work to estimate a mineral resource. It is uncertain if further exploration will result in the estimation of a mineral resource. The exploration results described in this presentation therefore do not represent, and should not be construed to be, an estimate of a mineral resource or mineral reserve.

Non-U.S. GAAP Measures - We supplement the reporting of our financial information determined under United States generally accepted accounting principles (U.S. GAAP) with certain non-U.S. GAAP financial measures, including adjusted net income (loss), operating cash flow before changes in working capital, adjusted EBITDA, adjusted EBITDA margin, total leverage, net leverage, free cash flow, adjusted costs applicable to sales per ounce/pound and adjusted liquidity. We believe that these adjusted measures provide meaningful information to assist management, investors and analysts in understanding our financial results and assessing our prospects for future performance. We believe these adjusted financial measures are important indicators of our recurring operations because they exclude items that may not be indicative of, or are unrelated to our core operating results, and provide a better baseline for analyzing trends in our underlying businesses. We believe adjusted net income (loss), adjusted EBITDA, adjusted EBITDA margin, total leverage, net leverage, free cash flow, adjusted costs applicable to sales per ounce/pound and adjusted liquidity are important measures in assessing the Company's overall financial performance. This presentation does not represent an offer of any securities for sale.



*Creates U.S.
Precious Metals
Leader*

Approximately \$20 billion combined market capitalization company with seven North American operations, sector-leading free cash flow yield, and best-in-class trading liquidity



*Enhanced Resiliency
with Compelling
Transaction Metrics*

Double-digit reduction in CAS per ounce; >35% of combined revenue from Canada; accretive to NAV, OCF, and FCF per share; larger, balanced platform reduces risk and increases financial and operational flexibility



*Significant & Immediate
Addition to EBITDA
& Free Cash Flow*

Expect to generate over \$3 billion of EBITDA and \$2 billion of free cash flow in 2026¹ at lower overall costs and higher overall margins



*Robust Financial
Position with Growing
Cash Balance*

Strong free cash flow and commitment to maintaining a net cash position create a path to an investment-grade credit rating and shareholder returns



*Highly Attractive &
Unique Metals Mix*

Metals mix of approximately 65% gold, 30% silver, and 5% copper, remaining one of the world's largest silver producers

(1) Based on guidance as published by Coeur on March 23, 2026, reflecting nine months of contribution from New Afton and Rainy River.



New Assets Drive Strong Consolidated Guidance

- Reflecting nine months of contributions from New Afton and Rainy River, Coeur expects 2026 combined gold, silver and copper production of 680 – 815K ounces, 18.7 – 21.9M ounces, and 50 – 65M pounds, respectively¹
- Coeur 2025A production: 419K gold ounces and 17.9M silver ounces



New Afton and Rainy River Year-End 2025 R&R Update

- With the addition of New Afton and Rainy River, Coeur's proven and probable reserves increased 46% on a gold equivalent basis²
- Updated technical reports highlight mine life expansion opportunities and strong free cash flow including a two-year LOM extension at Rainy River
- Initial K-Zone resource of 48M tonnes of M&I plus 6M tonnes of inferred resources positions New Afton for substantial mine life extension



Updated Financial Policy

- Continue investment in exploration and organic growth opportunities
- Build and maintain a liquid and resilient balance sheet
- Commence expanded \$750M share repurchase program
- Initiate inaugural semiannual cash dividend policy of \$0.02 per share

(1) Guidance as published by Coeur on March 23, 2026.

(2) Gold equivalence assumes gold-to-silver, -copper, -lead, -zinc ratios of 1:60, 1:629, 1:1,200 and 1:1,000, respectively.

> Overview of Consolidated 2026 Production Guidance¹



Operation	2025 Production	2026 Guidance Range	Illustrative Production Profile	Commentary	
Gold Production (oz)	Las Chispas	54,705	55,000 – 65,000		<ul style="list-style-type: none"> Higher production due to a full year of contribution
	Palmarejo	100,768	95,000 – 105,000		<ul style="list-style-type: none"> Hidalgo corridor and underground investments to drive consistent production levels
	Rochester	60,178	70,000 – 90,000		<ul style="list-style-type: none"> Higher production driven by higher expected crusher availability; lower planned grades in 1H
	Kensington	106,068	98,000 – 110,000		<ul style="list-style-type: none"> Underground drilling and development investment positions operation for consistent production
	Wharf	97,327	72,000 – 90,000		<ul style="list-style-type: none"> Production expected to track new crusher commissioning in 2Q
	Coeur Sub Total	419,046	390,000 – 460,000		
	New Afton	63,536	60,000 – 80,000		<ul style="list-style-type: none"> C-Zone ramp-up; guidance reflects nine months of contribution
	Rainy River	290,236	230,000 – 275,000		<ul style="list-style-type: none"> Strong mill performance; guidance reflects nine months of contribution
	Coeur + New Gold	772,818	680,000 – 815,000		

(1) Guidance as published by Coeur on March 23, 2026.

> Overview of Consolidated 2026 Production Guidance¹



	Operation	2025 Production	2026 Guidance Range	Illustrative Production Profile	Commentary
Silver Production (K oz)	Las Chispas	5,146	5,500 – 6,300		• See gold commentary for additional details
	Palmarejo	6,501	6,250 – 7,000		• See gold commentary for additional details
	Rochester	6,132	6,400 – 7,800		• See gold commentary for additional details
	Wharf	136	50 – 200		• See gold commentary for additional details
	Coeur Sub Total	17,915	18,200 – 21,300		
	New Afton	-	130 – 180		• See gold commentary for additional details
	Rainy River	-	350 – 450		• See gold commentary for additional details
	Coeur + New Gold	17,915	18,680 – 21,930		
Copper Production (M lbs)	Operation	2025 Production	2026 Guidance Range	Illustrative Production Profile	Commentary
	New Afton	50.1	50.0 – 65.0		• See gold commentary for additional details
	Coeur + New Gold	50.1	50.0 – 65.0		

(1) Guidance as published by Coeur on March 23, 2026.

> Expanded Reserve and Resource Base

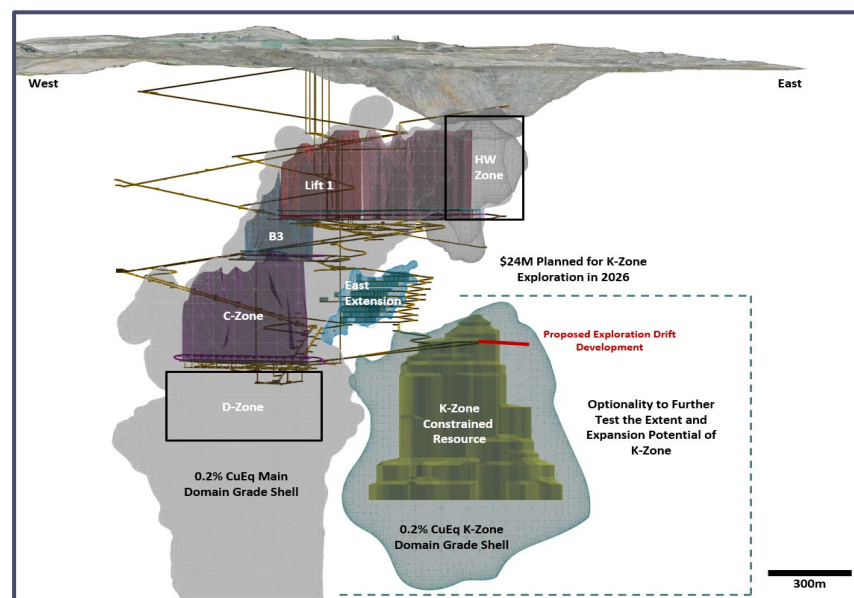
The addition of New Afton and Rainy River increases Coeur's gold equivalent proven and probable reserves by 46% and gold equivalent measured and indicated resources by 68%¹



Note: See slides in the appendix to this presentation for additional information related to mineral reserves and resources.
 (1) Gold equivalence assumes gold-to-silver, -copper, -lead, -zinc ratios of 1:60, 1:629, 1:1,200 and 1:1,000, respectively.

Highlights

- ✓ Gold and copper production expected to average 105,000 ounces and 88 million pounds, respectively, over the next five years from C-Zone
- ✓ Throughput expected to ramp up to 15,000 tonnes per day from C-Zone during the first half of 2026
- ✓ Life of mine EBITDA of \$3.4 billion and free cash flow of \$2.8 billion¹
- ✓ K-Zone initial resource includes 48 million M&I tonnes plus additional 6 million inferred tonnes



Year-End 2025 Reserves and Resources²

	Tonnes (000s)	Grade			Contained		
		Au (g/t)	Ag (g/t)	Cu (%)	Au (K oz)	Ag (K oz)	Cu (M lbs)
PROVEN AND PROBABLE RESERVES	36,174	0.67	1.79	0.74	780	2,101	591
MEASURED AND INDICATED	104,654	0.46	1.67	0.52	1,545	5,606	1,208
INFERRED	7,166	0.44	1.47	0.53	100	338	83

Year-End 2024 Reserves and Resources^{2,3}

	Tonnes (000s)	Grade			Contained		
		Au (g/t)	Ag (g/t)	Cu (%)	Au (K oz)	Ag (K oz)	Cu (M lbs)
PROVEN AND PROBABLE RESERVES	39,567	0.65	1.8	0.72	828	2,253	631
MEASURED AND INDICATED	81,643	0.51	1.69	0.61	1,352	4,431	1,100
INFERRED	132	0.19	0.54	0.19	1	2	1

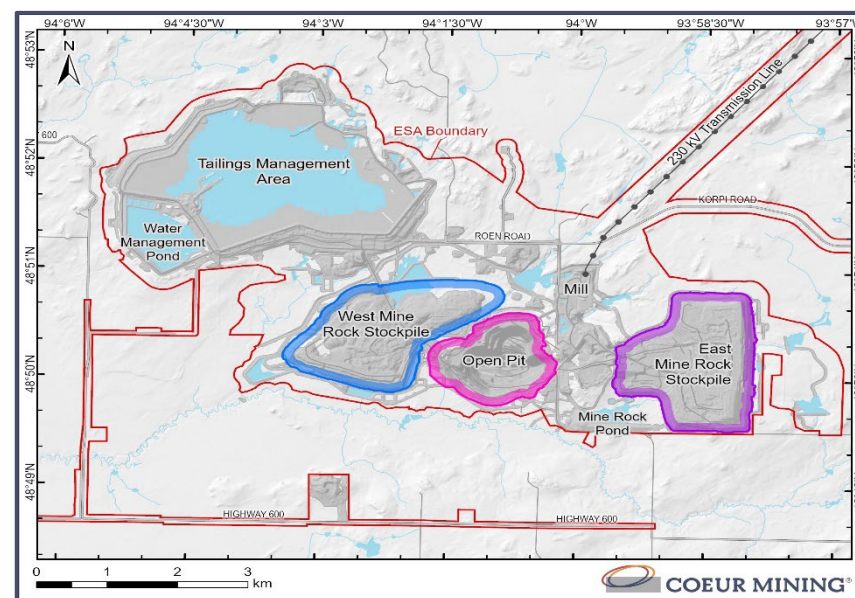
(1) See New Afton mine technical report dated December 31, 2025.

(2) See slides in the appendix to this presentation for additional information related to mineral reserves and resources.

(3) 2024 year-end reserves and resources were calculated under NI 43-101, while 2025 year-end reserves and resources were calculated under S-K 1300.

Highlights

- ✓ Replaced depletion in 2025 and extended reserves-only mine life by two years to 2035
- ✓ Annual gold and silver production expected to average 287,000 ounces and 527,000, respectively, through 2028
- ✓ Life of mine EBITDA of \$3.0 billion and free cash flow of \$2.2 billion¹
- ✓ Addition of Northwest extension to the mine plan expands open pit mining



Year-End 2025 Reserves and Resources ²				
	Tonnes (000s)	Grade		Contained
		Au (g/t)	Ag (g/t)	Au (K oz)
PROVEN AND PROBABLE RESERVES	54,508	1.27	3.18	2,226
MEASURED AND INDICATED	56,701	0.89	3.54	1,630
INFERRED	7,529	1.73	4.14	418

Year-End 2024 Reserves and Resources ^{2,3}				
	Tonnes (000s)	Grade		Contained
		Au (g/t)	Ag (g/t)	Au (K oz)
PROVEN AND PROBABLE RESERVES	52,926	1.25	3.25	2,126
MEASURED AND INDICATED	35,083	1.15	4.05	1,294
INFERRED	7,663	1.62	3.68	398

(1) See Rainy River mine technical report dated December 31, 2025.

(2) See slides in the appendix to this presentation for additional information related to mineral reserves and resources.

(3) 2024 year-end reserves and resources were calculated under NI 43-101, while 2025 year-end reserves and resources were calculated under S-K 1300.

> Updated Financial Policy

Updated financial policy grounded on a disciplined capital allocation framework that focuses on maximizing long-term value for stockholders



> 2026 Consolidated Guidance¹



Production Outlook	Gold (oz)	Silver (K oz)	Copper (M lbs)
Las Chispas	55,000 – 65,000	5,500 – 6,300	-
Palmarejo	95,000 – 105,000	6,250 – 7,000	-
Rochester	70,000 – 90,000	6,400 – 7,800	-
Kensington	98,000 – 110,000	-	-
Wharf	72,000 – 90,000	50 – 200	-
Coeur Sub Total	390,000 – 460,000	18,200 – 21,300	-
New Afton	60,000 – 80,000	130 – 180	50 – 65
Rainy River	230,000 – 275,000	350 – 450	-
Coeur + New Gold	680,000 – 815,000	18,680 – 21,930	50 – 65

CAS Outlook	Gold (oz)	Silver (K oz)	Copper (\$/lb)
Las Chispas (co-product)	\$750 - \$950	\$12.50 - \$14.50	-
Palmarejo (co-product)	\$700 - \$900	\$21.50 - \$23.50	-
Rochester (co-product)	\$1,350 - \$1,550	\$23.00 - \$25.00	-
Kensington	\$1,750 - \$1,950	-	-
Wharf (by-product)	\$1,400 - \$1,600	-	-
New Afton (co-product) ²	\$1,000 - \$1,200	-	\$1.20 - \$1.35
Rainy River (by-product) ²	\$2,150 - \$2,350	-	-

Capital, DD&A, Exploration, G&A and Income and Mining Tax Guidance (US\$M)	Coeur Sub Total	Coeur + New Gold
Capital Expenditures, Sustaining ³	\$207 - \$239	\$291 - \$337
Capital Expenditures, Development	\$98 - \$125	\$146 - \$189
Exploration, Expensed ⁴	\$93 - \$103	\$118 - \$132
Exploration, Capitalized	\$27 - \$33	\$29 - \$37
General & Administrative Expenses	\$63 - \$67	\$90 - \$100
Cash Income and Mining Taxes	\$400 - \$500	\$475 - \$600
Depreciation	\$335 - \$390	\$1,200 - \$1,400
Effective Tax Rate (%)	29% - 35%	30% - 36%

Note: The Company's guidance figures assume prices of \$4,550/oz gold and \$77.50/oz silver and \$5.00/lb copper as well as CAD of 1.38 and MXN of 18.00. Guidance figures exclude the impact of any metal sales or foreign exchange hedges.

(1) See non-GAAP reconciliation tables in the appendix to this presentation.

(2) New Afton CAS per gold ounce includes the non-cash impact of the \$21 million total of the preliminary purchase price allocation ascribed to inventory, split between gold (\$134 per ounce) and copper (\$0.15 per pound). Rainy River CAS per gold ounce includes the non-cash impact of \$180 million (\$675 per ounce) of the preliminary purchase price allocation ascribed to inventory. It also includes \$41 million (\$155 per ounce) of stripping costs which are capitalized under U.S. GAAP and \$93 million (\$239 per ounce) related to how the streaming arrangement with Royal Gold is reported under U.S. GAAP.

(3) Sustaining capital expenditures excludes capital leases.

(4) Figure excludes \$15 - \$16 million associated with underground mine development and support costs at Silvertip.

Appendix

> Non-GAAP to U.S. GAAP Reconciliation for Guidance



Costs Applicable to Sales Guidance for 2026

Unaudited							
(\$ thousands, except metal sales and per ounce amounts)	New Afton	Rainy River	Las Chispas	Palmarejo	Rochester	Kensington	Wharf
Costs applicable to sales, including amortization (U.S. GAAP)	723,147	930,884	\$397,764	\$161,390	\$365,418	\$233,583	\$142,683
Amortization	(557,321)	(309,164)	(174,548)	(36,491)	(88,753)	(41,722)	(8,965)
Reported costs applicable to sales	\$165,826	\$621,720	\$223,216	\$124,899	\$276,665	\$191,861	\$133,718
By-product credit	(14,325)	(26,950)	-	-	-	-	(6,132)
Adjusted costs applicable to sales	\$151,501	\$594,770	\$223,216	\$124,899	\$276,665	\$191,861	\$127,586
Metal Sales							
Gold ounces	70,071	267,315	59,521	100,000	81,143	105,137	86,868
Silver ounces	187,153	664,427	5,934,277	6,796,223	7,136,315		79,401
Copper pounds	57,921,066						
Revenue Split							
Gold	53%	100%	34%	37%	40%	100%	100%
Silver			66%	63%	60%		
Copper	47%						
Costs applicable to sales							
Gold (\$/oz) ¹	\$1,000 - \$1,200	\$2,150 - \$2,350	\$750 - \$950	\$700 - \$900	\$1,350 - \$1,550	\$1,750 - \$1,950	\$1,400 - \$1,600
Silver (\$/oz) ¹			\$12.50 - \$14.50	\$21.50 - \$23.50	\$23.00 - \$23.50		
Copper (\$/lb)	\$1.20 - \$1.35						

2025 Proven and Probable Mineral Reserves

	Location	Tonnes	Grade			Contained		
			Gold (g/t)	Silver (g/t)	Copper (%)	Gold (oz)	Silver (oz)	Copper (lbs)
PROVEN RESERVES								
New Afton	Canada, BC	-	-	-	-	-	-	-
Rainy River	Canada, ON	16,915,000	0.44	2.33		240,000	1,215,000	
Las Chispas	Sonora, Mexico	982,000	4.18	442.58		132,000	13,973,000	
Palmarejo	Chihuahua, Mexico	5,137,000	1.79	117.12		295,000	19,344,000	
Rochester	Nevada, USA	402,556,000	0.09	12.81		1,162,000	165,799,000	
Kensington	Alaska, USA	1,539,000	5.92	0.00		293,000		
Wharf	South Dakota, USA	20,334,000	0.73	0.00		477,000		
Total		447,462,000	0.18	14.64		2,600,000	200,332,000	
PROBABLE RESERVES								
New Afton	Canada, BC	36,174,000	0.67	1.80	0.74%	778,000	2,092,000	591,000,000
Rainy River	Canada, ON	37,595,000	1.64	3.60		1,986,000	4,356,000	
Las Chispas	Sonora, Mexico	2,238,000	2.28	198.64		164,000	14,292,794	
Palmarejo	Chihuahua, Mexico	13,927,000	1.41	100.44		632,000	44,973,000	
Rochester	Nevada, USA	45,101,000	0.12	11.04		171,000	16,014,000	
Kensington	Alaska, USA	1,297,000	6.07	0.00		253,315		
Wharf	South Dakota, USA	34,727,000	0.69	0.00		773,000		
Total		171,060,000	0.87	18.82		4,757,000	81,728,000	591,000,000
PROVEN AND PROBABLE RESERVES								
New Afton	Canada, BC	36,174,000	0.67	1.80	0.74%	778,000	2,092,000	591,000,000
Rainy River	Canada, ON	54,510,000	1.27	3.18		2,226,000	5,571,000	
Las Chispas	Sonora, Mexico	3,221,000	2.87	272.95		297,000	28,266,000	
Palmarejo	Chihuahua, Mexico	19,064,000	1.51	104.94		928,000	64,318,000	
Rochester	Nevada, USA	447,656,000	0.09	12.63		1,332,000	181,814,000	
Kensington	Alaska, USA	2,836,000	5.99	0.00		546,000		
Wharf	South Dakota, USA	55,061,000	0.71	0.00		1,250,000		
Total Proven and Probable Reserves		618,552,000	0.37	15.65		7,357,000	282,060,000	591,000,000

> Reserves and Resources (cont.)

2025 Measured and Indicated Mineral Resources (excluding Reserves)

	Location	Tonnes	Grade					Contained				
			Gold (g/t)	Silver (g/t)	Zinc (%)	Lead (%)	Copper (%)	Gold (oz)	Silver (oz)	Zinc (lbs)	Lead (lbs)	Copper (lbs)
MEASURED RESOURCES												
New Afton	Canada, BC	37,049,000	0.60	2.14			0.68%	715,000	2,555,000			552,000,000
Rainy River	Canada, ON	304,000	2.25	17.39				22,000	170,000			
Las Chispas	Sonora, Mexico	282,000	0.77	77.98				7,000	707,000			
Palmarejo	Chihuahua, Mexico	4,598,000	1.60	94.99				236,000	14,042,000			
Rochester	Nevada, USA	133,346,000	0.06	8.92				253,000	38,261,000			
Kensington	Alaska, USA	1,114,000	7.48	-				268,000	-			
Wharf	South Dakota, USA	9,681,000	0.55	-				171,000	-			
Silvertip	Canada, BC	1,173,000	-	244.45	6.60%	4.61%			9,219,000	170,611,000	119,213,000	
Total		186,375,000	0.28	11.49				1,672,000	65,314,000	170,611,000	119,213,000	552,000,000
INDICATED RESOURCES												
New Afton	Canada, BC	67,605,000	0.38	1.40			0.44%	831,000	3,051,000			656,000,000
Rainy River	Canada, ON	56,398,000	0.89	3.47				1,608,000	6,291,000			
Las Chispas	Sonora, Mexico	1,700,000	1.12	103.37				61,000	5,650,000			
Palmarejo	Chihuahua, Mexico	12,197,000	2.02	108.28				792,000	42,462,000			
Rochester	Nevada, USA	34,996,000	0.09	11.45				100,000	12,882,000			
Kensington	Alaska, USA	674,000	7.57	-				164,000	-			
Wharf	South Dakota, USA	52,116,000	0.61	-				1,014,000	-			
Silvertip	Canada	7,170,000	-	209.82	6.73%	3.58%			48,369,000	1,063,609,000	566,286,000	
Total		225,686,000	0.63	20.50				4,569,000	118,706,000	1,063,609,000	566,286,000	656,000,000
MEASURED AND INDICATED RESOURCES												
New Afton	Canada, BC	104,654,000	0.46	1.67			0.52%	1,545,000	5,606,000			1,208,000,000
Rainy River	Canada, ON	56,702,000	0.89	3.54				1,630,000	6,461,000			
Las Chispas	Sonora, Mexico	1,983,000	1.05	99.71				67,000	6,357,000			
Palmarejo	Chihuahua, Mexico	16,796,000	1.90	104.64				1,028,000	56,505,000			
Rochester	Nevada, USA	168,342,000	0.07	9.52				353,000	51,503,000			
Kensington	Alaska, USA	1,788,000	7.53	-				433,000	-			
Wharf	South Dakota, USA	61,797,000	0.60	-				1,185,000	-			
Silvertip	Canada	8,343,000	-	214.69	6.71%	3.73%			57,588,000	685,499,000	1,234,220,000	
Total Measured and Indicated Resources		412,061,000	0.47	16.04				6,242,000	184,020,000	685,499,000	1,234,220,000	1,208,000,000

> Reserves and Resources (cont.)

2025 Inferred Mineral Resources

Location	Tonnes	Grade					Contained				
		Gold (g/t)	Silver (g/t)	Zinc (%)	Lead (%)	Copper (%)	Gold (oz)	Silver (oz)	Zinc (lbs)	Lead (lbs)	Copper (lbs)
INFERRED RESOURCES											
New Afton	Canada, BC	7,166,000	0.43	1.47		0.53%	100,000	338,000			83,000,000
Rainy River	Canada, ON	7,529,000	1.73	4.14			418,000	1,003,000			
Las Chispas	Sonora, Mexico	2,117,000	1.98	172.88			135,000	11,767,000			
Palmarejo	Chihuahua, Mexico	19,203,000	2.05	97.64			1,265,000	60,281,000			
Rochester	Nevada, USA	138,129,000	0.07	12.37			323,000	54,925,000			
Kensington	Alaska, USA	453,000	6.59	-			96,000	-			
Wharf	South Dakota, USA	72,881,000	0.63	-			1,487,000	-			
Silvertip	Canada, BC	1,960,000	-	181.43	6.31%	3.12%	-	11,433,000	272,616,000	134,694,000	
Wilco	Nevada, USA	23,347,000	0.71	4.46			531,000	3,346,000			
Total Inferred Resources		270,826,000	0.50	22.31			4,355,000	143,093,000	272,616,000	134,694,000	83,000,000

> Reserves and Resources (cont.)

Notes to 2025 Mineral Reserves:

- (1) The Mineral Reserve estimates are current as of December 31, 2025, are reported using the definitions in Item 1300 of Regulation S-K and were prepared by the Company's technical staff. Mineral Reserve point of reference is delivered to the process facility.
- (2) Assumed metal prices for 2025 Mineral Reserves were \$26.00 per ounce of silver, \$2,200 per ounce of gold, \$1.15 per pound of zinc, \$0.95 per pound of lead.
- (3) Palmarejo Mineral Reserve estimates use the following key input parameters: assumption of conventional longhole underground mining; reported above a variable gold equivalent cut-off grade that ranges from 1.27–2.19 g/tonne AuEq and an incremental development cut-off grade 0.78 g/tonne AuEq; metallurgical recovery assumption of 95.4% for gold and 87.1% for silver; mining dilution assumes 0.4–1.0 meter of hanging/foot wall waste dilution; mining loss of 15% was applied; variable mining costs that range from US\$32.29–\$43.08/tonne, surface haulage costs of US\$4.40/tonne, process costs of US\$30.02/tonne, general and administrative costs of US\$14.17/tonne, and surface/auxiliary support costs of US\$3.52/tonne. Excludes the impact of the Franco-Nevada gold stream agreement at Palmarejo in calculation of Mineral Reserves. No assurances can be given that all mineral reserves will be mined, as mineralized material that may qualify as reserves under applicable standards by virtue of having positive economics may not generate attractive enough returns to be included in our mine plans, due to factors such as the impact of the gold stream at Palmarejo. As a result, we may elect not to mine portions of the mineralized material reported as reserves.
- (4) Rochester Mineral Reserve estimates are tabulated within a confining pit design and use the following input parameters: Rochester oxide variable recovery Au = 71.2–85.9% and Ag = 59.4%; Rochester sulfide variable recovery Au = 15.2–77.7% and Ag = 0.0–59.4%; with a net smelter return (“NSR”) cut-off of \$4.12/ton oxide and US\$4.22/ton sulfide; Nevada Packard oxide recovery Au = 88.4% and Ag = 59.4%; with a net smelter return cut-off of \$4.92/ton for oxide; Lincoln Hill oxide recovery Au = 61–63.9% and Ag = 18.5–39.5%; with a net smelter return cut-off of \$5.02/ton for oxide where the NSR is calculated as net smelter return (NSR) = silver grade (oz/ton) * silver recovery (%) * (silver price (\$/oz) - refining cost (\$/oz)) + gold grade (oz/ton) * gold recovery (%) * (gold price (\$/oz) - refining cost (\$/oz)); variable pit slope angles that approximately average 48° over the life-of-mine.
- (5) Kensington Mineral Reserve estimates use the following key input parameters: assumption of conventional underground mining; reported above a gold cut-off grade of 0.123 oz/ton Au and an incremental development cut-off grade of 0.04 oz/ton Au; metallurgical recovery assumption of 94.5%; gold payability of 97.5%; gold royalty of 1.5%; mining dilution of 15–20%; mining loss of 12% was applied; mining costs of US\$127.32/ton mined; process costs of US\$51.48/ton processed; general and administrative costs of US\$49.74/ton processed; sustaining capital US\$5.79/ton processed; and concentrate refining and shipping costs of US\$104.73/oz sold.
- (6) Wharf Mineral Reserve estimates use the following key input parameters: assumption of conventional open pit mining; reported above a NSR cut-off grade of \$13.42/ton ; average metallurgical recovery assumption of 78.0%; royalty burden of US\$112.00/oz Au; pit slope angles that vary from 34–50°; mining costs of US\$2.71/ton mined, process costs of US\$13.42/ton processed (includes general & administrative and sustaining capital costs).
- (7) Las Chispas Mineral Reserve estimates uses the following key input parameters: assumption of conventional underground mining; reported above a silver equivalent (AgEq) cut-off grade of 140 g / tonne and an incremental development cut-off grade of 59 g/tonne AgEq; metallurgical recovery assumption of 97.5% for silver and 98.0% for gold; mining dilution assumes 5% for development, 1 meter to 1.25 meters of ELOS (0.25 m – 0.5 m of hanging wall and 0.5 m – 1.0 m of footwall dilution) depending on geotechnical conditions in each stoping location, 0.2 meter ELOS (0.1 m of hanging wall and 0.1 m of footwall dilution) for cut and fill, 0.25 m for each exposed backfill floor, and 0.5 m for each exposed backfill wall; mining loss of 2% for development and 5% for stoping was applied; variable production mining costs that range from US\$65–US\$154/tonne, development mining costs of US\$39/tonne, process costs of US\$42/tonne, site general and administrative costs of US\$25/tonne, underground general and administrative costs of US\$18/tonne, and sustaining capital costs of US\$12/tonne.

> Reserves and Resources (cont.)

Notes to 2025 Mineral Reserves (cont):

- 8) New Afton Mineral Reserve estimates uses the following key input parameters: New C-Zone block cave Mineral Reserves are reported at a cut-off NSR of US\$24/tonne and East Extension Mineral Reserves are reported at a cut-off NSR of US\$100/tonne, based on processing costs of US\$9.00/tonne processed, G&A costs of US\$3.50/tonne processed, block caving costs of US\$11.50/tonne ore mined, and stoping costs of US\$87.50/tonne ore mined. Metallurgical recoveries vary depending on ore type and grades.
- 9) Rainy River Mineral Reserve estimates uses the following key input parameters: The estimate for the open pit mineral reserves uses the following key input parameters: conventional open pit mining; gold price of US\$2,200/oz Au and silver price of US\$26/oz Ag; gold selling cost of US\$3.54/oz Au and silver selling cost of US\$1/oz Ag; reported above a gold equivalent cut-off grade of 0.30 g/tonne AuEq; variable metallurgical recoveries; royalty burden of 1.4%; variable pit slope angles by litho-structural domain; overburden mining cost of US\$3.18/tonne mined, base mining cost at 300 m bench of US\$4.38/tonne mined and incremental mining cost of US\$0.025/tonne mined per 10 m bench; processing cost of US\$10.40/tonne processed, and general and administrative costs of US\$4.49/tonne processed.
- 10) Rounding of tonnes, grades, and ounces, as required by reporting guidelines, may result in apparent differences between tonnes, grades, and contained metal contents.

> Reserves and Resources (cont.)

Notes to 2025 Mineral Resources:

- (1) In-situ Mineral Resource estimates are reported exclusive of mineral reserves, are current as of December 31, 2025, are reported using definitions in Item 1300 of Regulation S-K and were prepared by the Company's technical staff.
- (2) Assumed metal prices for 2025 estimated Mineral Resources were \$30.00 per ounce of silver, \$2,500 per ounce of gold, \$1.30 per pound of zinc, \$1.00 per pound of lead, unless otherwise noted.
- (3) Palmarejo Mineral Resource estimates use the following key input parameters: assumption of conventional longhole underground mining; reported above a variable gold equivalent cut-off grade that ranges from 0.93–1.62 g/tonne AuEq; metallurgical recovery assumption of 95.4% for gold and 87.1% for silver; variable mining costs that range from US\$32.29–\$43.08/tonne; surface haulage costs of US\$4.40/tonne; process costs of US\$30.02/tonne; general and administrative costs of US\$14.17/tonne; and surface/auxiliary support costs of US\$3.52/tonne. Excludes the impact of the Franco-Nevada gold stream agreement at Palmarejo in calculation of Mineral Resources.
- (4) Kensington Mineral Resource estimates use the following key input parameters: assumption of conventional longhole underground mining; reported above a variable gold cut-off grade of 0.108 oz/ton Au; metallurgical recovery assumption of 94.5%; gold payability of 97.5%; mining costs of US\$127.32/ton mined; process costs of US\$51.48/ton processed; general and administrative costs of US\$49.74/ton processed; sustaining capital US\$5.79/ton processed; and concentrate refining and shipping costs of US\$104.73/oz sold.
- (5) Wharf Mineral Resource estimates use the following key input parameters: assumption of conventional open pit mining; reported above a NSR cut-off grade of \$13.42/ton; average metallurgical recovery assumption of 78.0% across all rock types; royalty burden of US\$112.00/oz Au; pit slope angles that vary from 34–50°; mining costs of \$2.71/ton mined; process costs of US\$13.42/ton processed (includes general & administrative and sustaining capital costs).
- (6) Rochester Mineral Resource estimates are tabulated within a confining pit shell and use the following input parameters: Rochester oxide variable recovery Au = 71.2–85.9% and Ag = 59.4% and Rochester sulfide variable recovery Au = 15.2–77.7% and Ag = 0.0–59.4%, with a net smelter return cut-off of \$4.12/ton oxide and US\$4.22/ton sulfide; Nevada Packard oxide recovery Au = 88.4% and Ag = 59.4%, with a net smelter return cut-off of \$4.92/ton for oxide; Lincoln Hill oxide recovery Au = 61–63.9% and Ag = 18.5–39.5%, with a net smelter return cut-off of \$5.02/ton for oxide, where the NSR is calculated as net smelter return (NSR) = silver grade (oz/ton) * silver recovery (%) * (silver price (\$/oz) - refining cost (\$/oz)) + gold grade (oz/ton) * gold recovery (%) * (gold price (\$/oz) - refining cost (\$/oz)); variable pit slope angles that approximately average 48° over the life-of-mine.
- (7) Silvertip Underground Mineral Resource estimates are reported using a net smelter return cut-off of US\$130/tonne. Mineral Resources are reported insitu using the following assumptions: The estimates use the following key input parameters: lead recovery of 89–90%, zinc recovery of 82–83% and silver recovery of 83–84%. Lead concentrate grade of 53–54%; zinc concentrate grade of 56–57%; mining costs of US\$68.77/tonne; processing costs of US\$58.20/tonne and US\$46.49/tonne, where the NSR (\$/tonne) = tonnes x grade x metal prices x metallurgical recoveries – royalties – TCRCs – transport costs over the life of the mine.
- (8) Wilco Open Pit Mineral Resource estimates are reported using an equivalent gold cut-off of 0.20 ounces per ton assuming a silver to gold ratio of 60:1. Resources are reported in-situ and contained within a conceptual measured, indicated and inferred optimized pit shell. Silver price of US\$22/oz, gold price of US\$1,350/oz. Average oxide and sulfide gold recovery is 70%, average carbonaceous gold recovery is 50%. Average oxide and sulfide gold recovery is 60%. Average carbonaceous silver recovery is 50%. Open pit mining cost is US\$1.50/ton, processing and G&A cost is US\$5.46/ton; average pit slope angles of 50°.

> Reserves and Resources (cont.)

Notes to 2025 Mineral Resources (cont.):

- (9) Las Chispas Mineral Resource estimates uses the following key input parameters: assumption of conventional underground mining; reported above a silver equivalent cut-off grade (AgEq) of 140 g/tonne; metallurgical recovery assumption of 97.5% for silver and 98.0% for gold; mining loss of 2% for development and 5% for stoping was applied, additional losses have been included to account for the required pillars in uphole stopes that cannot be filled; variable production mining costs that range from US\$58.06–US\$239.51/tonne, development mining costs of US\$27.40/tonne, process costs of US\$45.72/tonne, site general and administrative costs of US\$20.70/tonne, underground general and administrative costs of US\$12.81/tonne, and sustaining capital costs of US\$7.64/tonne.
- (10) New Afton Mineral Resource estimates uses the following key input parameters: The following copper-equivalency (CuEq%) formula is used: $Cu\% + (Au \text{ g/tonne} * Au \text{ Recovery} * Au \text{ Payable} * (Au \text{ Price} - \text{Refining}) / 31.1035) + (Ag \text{ g/tonne} * Ag \text{ Recovery} * Ag \text{ Payable} * (Ag \text{ Price} - \text{Refining}) / 31.1035) / (22.046 * Cu \text{ Recovery} * Cu \text{ Payable} * (Cu \text{ Price} - \text{Refining}))$. The calculations are based on the following: Au price: US\$2,500/oz Au; Au recovery: 87.7%; Au payable: 97.0%; Au refining charge: US\$6.00/oz; Ag price: US\$30/oz Au; Ag recovery: 73.5%; Ag payable: 90.0%; Ag refining charge: US\$0.50/oz; Cu price: US\$4.40/lb Cu; Cu recovery: 86.4%; Cu payable: 96.4%; Cu refining charge: US\$0.8/lb.
- (11) Rainy River Mineral Resource estimates uses the following key input parameters: The estimate for the mineral resources considered potentially amenable to open pit mining methods uses the following key input parameters: assumption of conventional open pit mining; gold price of US\$2,500/oz Au and silver price of US\$30/oz Ag; gold selling cost of US\$3.54/oz Au; reported above a gold equivalent cut-off grade of 0.20 g/tonne AuEq; variable metallurgical recoveries; royalty burden of 1.4%; variable pit slope angles by litho-structural domain; overburden mining cost of US\$3.18/tonne mined, base mining cost at 300 m bench of US\$4.38/tonne mined and incremental mining cost of US\$0.025/tonne mined per 10 m bench; processing cost of US\$10.40/tonne processed, and general and administrative costs of US\$4.49/t processed.
- (12) Rounding of tonnes, grades, and ounces, as required by reporting guidelines, may result in apparent differences between tonnes, grades, and contained metal contents.

2024 Proven and Probable Mineral Reserves

	Location	Tonnes	Grade			Contained		
			Gold (g/t)	Silver (g/t)	Copper (%)	Gold (oz)	Silver (oz)	Copper (lbs)
PROVEN RESERVES								
New Afton	Canada, BC	-	-	-	-	-	-	-
Rainy River	Canada, ON	15,935,000	0.44	2.68		223,000	1,371,000	
Total		15,935,000	0.44	2.68		223,000	1,371,000	
PROBABLE RESERVES								
New Afton	Canada, BC	39,567,000	0.65	1.80	0.72%	828,000	2,253,000	631,000,000
Rainy River	Canada, ON	36,991,000	1.60	3.50		1,903,000	4,164,000	
Total		76,558,000	1.11	2.61		2,731,000	6,417,000	631,000,000
PROVEN AND PROBABLE RESERVES								
New Afton	Canada, BC	39,567,000	0.65	1.80	0.72%	828,000	2,253,000	631,000,000
Rainy River	Canada, ON	52,926,000	1.25	3.25		2,126,000	5,535,000	
Total Proven and Probable Reserves		92,493,000	0.99	2.62		2,954,000	7,788,000	631,000,000

> Reserves and Resources (cont.) – New Gold



2024 Measured and Indicated Mineral Resources (excluding Reserves)

	Location	Tonnes	Grade				Contained					
			Gold (g/t)	Silver (g/t)	Zinc (%)	Lead (%)	Copper (%)	Gold (oz)	Silver (oz)	Zinc (lbs)	Lead (lbs)	Copper (lbs)
MEASURED RESOURCES												
New Afton	Canada, BC	51,195,000	0.58	1.81			0.67%	958,000	2,976,000			758,000,000
Rainy River	Canada, ON	310,000	2.74	4.05				27,000	263,000			
Total		51,505,000	0.59	1.96				985,000	3,239,000			758,000,000
INDICATED RESOURCES												
New Afton	Canada, BC	30,448,000	0.40	1.49			0.51%	393,000	1,455,000			342,000,000
Rainy River	Canada, ON	34,772,000	1.13	3.86				1,267,000	4,310,000			
Total		65,220,000	0.79	2.75				1,660,000	5,765,000			342,000,000
MEASURED AND INDICATED RESOURCES												
New Afton	Canada, BC	81,643,000	0.51	1.69			0.61%	1,352,000	4,431,000			1,100,000,000
Rainy River	Canada, ON	35,083,000	1.15	4.05				1,294,000	4,573,000			
Total Measured and Indicated Resources		116,726,000	0.71	2.40				2,646,000	9,004,000			1,100,000,000

> Reserves and Resources (cont.) – New Gold



2024 Inferred Mineral Resources

	Location	Tonnes	Grade					Contained				
			Gold (g/t)	Silver (g/t)	Zinc (%)	Lead (%)	Copper (%)	Gold (oz)	Silver (oz)	Zinc (lbs)	Lead (lbs)	Copper (lbs)
INFERRED RESOURCES												
New Afton	Canada, BC	131,000	0.19	0.54			0.19%	1,000	2,000			1,000,000
Rainy River	Canada, ON	7,663,000	1.62	3.68				398,000	908,000			
Total Inferred Resources		7,794,000	1.59	3.63				399,000	910,000			1,000,000

Notes to 2024 Mineral Reserves:

- (1) The effective date of the 2024 Mineral Reserve Estimate is December 31, 2024.
- (2) Mineral Reserves are estimated using metal price assumptions of US\$3.50 per pound of copper, US\$1,650 per ounce of gold, and US\$20 per ounce of silver, and a foreign exchange rate assumption of C\$1.30 : US\$1.00.
- (3) New Afton Mineral Reserves have been estimated by the New Afton mine planning team under the supervision of Joshua Parsons, P.Eng., a full-time employee of New Gold, and a Qualified Person as defined by National Instrument 43-101. The estimate conforms to the CIM Definition Standards for Mineral Resources and Mineral Reserves.
- (4) New Afton B3 and C-Zone block cave Mineral Reserves are reported at a cut-off NSR of US\$24/tonne and East Extension Mineral Reserves are reported at a cut-off NSR of US\$100/tonne, based on processing costs of US\$9.00/tonne processed, G&A costs of US\$3.50/tonne processed, block caving costs of US\$11.50/tonne ore mined, and stoping costs of US\$87.50/tonne ore mined. Metallurgical recoveries vary depending on ore type and grades.
- (5) Rainy River Mineral Reserves have been estimated by the Rainy River mine planning team under the supervision of Jason Chiasson, P.Eng. and Alexander Alousis, P.Eng., both full-time employees of New Gold, and Qualified Persons as defined by National Instrument 43-101. The estimate conforms to the CIM Definition Standards for Mineral Resources and Mineral Reserves.
- (6) Rainy River open-pit Mineral Reserves are reported at a cut-off grade of 0.30 g/tonne AuEq, based on total ore-related costs of US\$15.09/tonne processed and underground Mineral Reserves are reported at a cut-off grade of 1.68 g/tonne AuEq, based on total ore-related costs
- (7) Numbers may not add up due to rounding.

Notes to 2024 Mineral Resources:

- (1) Mineral Resources are reported exclusive of Mineral Reserves.
- (2) The effective date of the 2024 Mineral Resource Estimate is December 31, 2024.
- (3) Mineral Resources are estimated using metal price assumptions of US\$4.20 per pound of copper, US\$1,980 per ounce of gold, and US\$24 per ounce of silver, and a foreign exchange rate assumption of 1.30 C\$/US\$.
- (4) New Afton Mineral Resources have been estimated by Vincent Nadeau-Benoit, P.Geo., and Joshua Parsons, P.Eng., both full-time employees of New Gold, and Qualified Persons as defined by National Instrument 43-101. The estimate conforms to the CIM Definition Standards for Mineral Resources and Mineral Reserves.
- (5) New Afton underground bulk mining, Mineral Resources are reported within mineable shapes created using a cut-off grade of 0.33% CuEq; due to the selectivity of the bulk mining method, blocks below 0.15% CuEq within the mineable shapes are not reported. For stope mining, Mineral Resources are reported within mineable shapes created using a cut-off grade of 0.98% CuEq and include must-take material.
- (6) Rainy River Mineral Resources have been estimated by Vincent Nadeau-Benoit, P.Geo., Jason Chiasson, P.Eng., and Alexander Alousis, P.Eng., all full-time employees of New Gold, and Qualified Persons as defined by National Instrument 43-101. The estimate conforms to the CIM Definition Standards for Mineral Resources and Mineral Reserves.
- (7) Rainy River open-pit Mineral Resources are reported within a conceptual pit shell at a cut-off grade of 0.30 g/tonne AuEq, based on total ore-related costs of US\$15.09/tonne processed. Underground Mineral Resources are reported within mineable shapes created using a cut-off grade of 1.40 g/tonne AuEq, based on total ore-related costs of US\$71.00/tonne ore mined.
- (8) Numbers may not add up due to rounding.

Mitchell J. Krebs – Chairman, President and Chief Executive Officer. During his twenty-year tenure with Coeur, Mr. Krebs has led nearly \$2 billion in capital raising and debt restructuring activities and has facilitated over \$4 billion of acquisitions and divestitures. Mr. Krebs was previously Coeur's Chief Financial Officer from March 2008 to July 2011 and held various positions in the corporate development department, including Senior Vice President of Corporate Development. Mr. Krebs previously served as the Chairman of The National Mining Association from September 2022 to September 2024 and as the former Chair of the ESG Task Force. Mr. Krebs previously served as a Director of Kansas City Southern Railway Company from May 2017 to April 2023 and is a past President of The Silver Institute.

Thomas S. Whelan – Executive Vice President and Chief Financial Officer. Prior to joining Coeur, Mr. Whelan served as CFO of Arizona Mining Inc. from September 2017 to August 2018, when the company was acquired from South32 Limited. Previously, Mr. Whelan served as CFO for Nevsun Resources Ltd. from January 2014 to August 2017. He is a chartered professional accountant and was previously a partner with the international accounting firm Ernst & Young (“EY”) LLP where he was the EY Global Mining & Metals Assurance sector leader, the leader of the EY Assurance practice in Vancouver and previously EY's Canadian Mining & Metals sector leader. Mr. Whelan graduated with a Bachelor of Commerce from Queen's University. Mr. Whelan has served as a member of the board of directors of Highlander Silver Corp., a precious metals exploration company, since October 2024.

Michael “Mick” Routledge – Executive Vice President and Chief Operating Officer. Mr. Routledge has over 25 years' experience with Rio Tinto in various roles beginning in 1987, including as the Chief Operating Officer (2011-2012) and Vice President HSE, Projects & Operational Value (2012-2014) of the Kennecott Utah Copper mine business and served as the Chief Operating Officer of Asahi Refining from 2015 to 2017. He served as Senior Director of Operational Excellence at Anagold Madencilik, a subsidiary of Alacer Gold Corp., a gold producer which merged with SSR Mining Inc. in the fall of 2020. Most recently, Mr. Routledge served as the Vice President of Major Projects and Studies of Alacer Gold Corp. from February 2020 until May 2020. Mr. Routledge currently chairs the Health & Safety Division Executive Committee for the Society for Mining, Metallurgy & Exploration board. He received an undergraduate degree from the University of Sunderland, England in Electrical and Control Engineering and received his MBA with a focus on business and strategic transformation from Henley Management College in England.

Casey M. Nault – Executive Vice President, General Counsel and Secretary. Mr. Nault has almost 30 years of experience as a corporate and securities lawyer, including prior in-house positions with Starbucks Corporation and Washington Mutual, Inc. and law firm experience with Gibson, Dunn & Crutcher. His legal experience includes securities compliance and SEC reporting, corporate governance and compliance, mergers and acquisitions, public and private securities offerings, other strategic transactions, general regulatory compliance, cross-border issues, land use and environmental issues, and overseeing complex litigation. In addition to leading the legal function, Mr. Nault also has executive responsibility for several other corporate functions including compliance, corporate responsibility, internal audit, government affairs and land management.

Aoife M. McGrath – Executive Vice President, Exploration. Ms. McGrath has over 20 years of mining industry experience, spanning all stages of exploration from greenfield works to continental-scale exploration programs. Most recently, Ms. McGrath served as Vice President Exploration, Africa and Middle East at Barrick Gold Corp. Prior to that time, she served as head of Exploration and Geology for Beadell Resources Limited as well as serving in various roles at Alamos Gold Inc., including Director, Exploration and Corporate Development and Vice President, Exploration. She holds a Master of Science in Mineral Exploration from the University of Leicester as well as a Master of Science in Engineering Geology from the Imperial College London.

Emilie C. Schouten – Executive Vice President and Chief Human Resources Officer. Ms. Schouten has over 20 years of experience in Human Resources, starting her career at General Electric, where she graduated from GE's Human Resources Leadership Program. After 6 years as an HR Manager with GE, her division was acquired by the world's largest electrical distribution company, Rexel, and Ms. Schouten went on to become the Director of Training and Development. Ms. Schouten has a B.A. in Sociology from Michigan State University and a M.S. in Industrial Labor Relations from University of Wisconsin-Madison.

Mitchell J. Krebs – Chairman, President and Chief Executive Officer. See prior slide.

J. Kenneth Thompson – Independent Lead Director. Former Chairman of the board of directors of Pioneer Natural Resources Company (oil and gas), former member of the board of directors of Alaska Air Group, Inc. (parent company of Alaska Airlines, Hawaiian Airlines and Horizon Air), and former Lead Independent Director of Tetra Tech, Inc. (engineering consulting). President and Chief Executive Officer of Pacific Star Energy LLC (private energy investment firm in Alaska) from September 2000 to present, with a principal holding in Alaska Venture Capital Group LLC (private oil and gas exploration company) from December 2004 to present; Executive Vice President of ARCO's Asia Pacific oil and gas operating companies in Alaska, California, Indonesia, China, and Singapore from 1998 to 2000. Mr. Thompson was a National Association of Corporate Directors Directorship 100 honoree in 2019.

Linda L. Adamany – Independent Lead Director and Chair of the Nominating and Governance Committee of Jefferies Financial Group (formerly known as Leucadia National Corporation), a diversified holding company engaged in a variety of businesses, since March 2022, and Board member since March 2014, and an Independent Member of the board of directors and chair of the Remuneration Committee of Jefferies International Limited, a wholly-owned subsidiary of Jefferies Financial Group Inc., since March 2021; non-executive director of BlackRock Institutional Trust Company since March 2018; non-executive director and chair of the Compensation Committee of Vitesse Energy, Inc. since January 2023; non-executive director of the Wood plc from October 2017 to May 2019; non-executive director of Amec Foster Wheeler plc, an engineering, project management, and consultancy company, from October 2012 until the Company was acquired by Wood plc in October 2017; member of the board of directors of National Grid plc, an electricity and gas generation, transmission, and distribution company, from November 2006 to November 2012. Served at BP plc in several capacities from July 1980 until her retirement in August 2007, most recently from April 2005 to August 2007 as a member of the five-person Refining & Marketing Executive Committee responsible for overseeing the day-to-day operations and human resource management of BP plc's Refining & Marketing segment, a \$45 billion business at the time. She was selected as one of Women Inc. Magazine's 2018 Most Influential Corporate Directors.

Pierre Beaudoin – Chairman of the board of directors of Radisson Mining Resources, Inc. (gold exploration company in Canada) since July 2024 and a member of the board since September 2021. Mr. Beaudoin is a mineral processing professional with over 40 years of international operating and project development experience. Mr. Beaudoin joined the board of directors of SilverCrest Metals, Inc. in June 2018 and subsequently became its Chief Operating Officer in November 2018, until Coeur's acquisition of SilverCrest in February 2025. During his five years in the role, he successfully led the technical studies, build and ramp-up of the Las Chispas operation. Mr. Beaudoin previously worked as both Chief Operating Officer and Senior Vice President of Capital Projects with Detour Gold Corporation (gold mining company) from January 2013 to July 2017 and January 2010 to December 2012, respectively. Served in various roles over a 16-year career with Barrick Gold Corporation, including in capital projects and management roles from September 2004 to January 2010.

Paramita Das – Served as Chief Strategy Officer and Senior Advisor to the Chief Executive Officer of Stardust Power Inc. (manufacturer of battery-grade lithium products) from September 2024 to November 2025. Previously, Ms. Das served as the Global Head of Marketing, Development and ESG (Chief Marketing Officer) Metals and Minerals at Rio Tinto from June 2022 to February 2024; President of Rio Tinto Nickle Inc., President and CEO of Alcan Primary Products Company, LLC and a member of the Board of Directors of Rio Tinto Services Inc. from July 2019 to September 2023 and General Manager, Marketing and Development, Metals, and Head of the Chicago Commercial Office, Rio Tinto from 2018 to 2021. Ms. Das served as Chief of Staff/Group Business Executive to the Rio Tinto Group CEO from 2016 – 2017. Ms. Das is a member of the board of directors of Genco Shipping & Trading Limited, a drybulk shipowner focused on global transportation of commodities, since March 2024 and a member of the board of directors of Toromont Industries, Ltd., a specialized equipment company, since November 2024. Ms. Das is a former Board member of World Business Chicago from 2020 – 2022; Chicago Children's Museum from 2019 – 2021 and UN Woman – USNC from 2014 to 2017. Ms. Das received a bachelor's degree in Architectural Engineering in 2001, and MBA in 2004 and additional post-graduate studies in Strategy and Finance in 2014.

> Board of Directors (cont.)

Patrick Godin – Mr. Godin has over 30 years of corporate, technical and operations experience in the mining industry. Mr. Godin served as President and Chief Executive Officer of New Gold Inc. from November 2022 until March 2026. Mr. Godin previously served as the Vice President and Chief Operating Officer of Pretium Resources Inc. where he was responsible for the operations of the Brucejack Mine. Previously, Mr. Godin was the President and Chief Executive Officer of Stornoway Diamond Corporation and served as its Chief Operating Officer and Vice President from 2010 to 2018. Mr. Godin has also held executive or senior operations positions for G Mining Services, Canadian Royalties, IAMGOLD and Cambior Inc. Mr. Godin holds a Bachelor of Engineering in Mining from Laval University in Quebec, Canada and has obtained the ICD.D designation from the Institute of Corporate Directors.

Jeane L. Hull – Ms. Hull has over 35 years of mining operational leadership and engineering experience, most notably holding the positions of Chief Operating Officer for Rio Tinto plc at the Kennecott Utah Copper Mine and Executive Vice President and Chief Technical Officer of Peabody Energy Corporation. She also held numerous management engineering and operations positions with Rio Tinto affiliates. Prior to joining Rio Tinto, she held positions with Mobil Mining and Minerals and has additional environmental engineering and regulatory affairs experience in the public and private sectors. Ms. Hull currently serves as a member of the Board of Directors of Epiroc AB since January 2018, Hudbay Minerals since June 2023, and Wheaton Precious Metals Corporation since May 2023. She previously served on the boards of Copper Mountain Mining Corp., Trevali Mining Corporation, Pretium Resources Inc., Interfor Corporation and Cloud Peak Energy Inc. Ms. Hull also served on the Advisory Board for South Dakota School of Mines and Technology for over ten years.

Eduardo Luna – Non-Executive Chairman of the Board of Rochester Resources Ltd. (junior natural resources company with assets in Mexico) since March 2018 and Lead Director of the Board of Directors of Vizsla Silver Corp. (junior natural resources company) since September 2025. Mr. Luna has spent over forty years in the precious metals mining industry and has held prior senior executive and board positions at several companies including Industrial Peñoles, Goldcorp Inc., Luismin SA de CV, Wheaton River Minerals Ltd., Alamos Gold Inc., Dyna Resource, Inc. and Primero Mining Corp. He is also a former member of the Board of Directors of Wheaton Precious Metals Corp. Mr. Luna is the former President of the Mexican Mining Chamber and a former President of the Silver Institute. He was inducted into the Mexico Mining Hall of Fame and serves as Chairman of the Advisory Board of the Faculty of Mines at the University of Guanajuato where he received a degree in Mining Engineering.

Robert E. Mellor – Independent Chairman of the board of Monro, Inc. (auto service provider) since June 2017, and appointed Interim Chief Executive Officer from August 2020 to April 2021. Previously Mr. Mellor was lead independent director from April 2011 to June 2017 and a member of the board of directors since August 2010; Former Chairman, Chief Executive Officer and President of Building Materials Holding Corporation (distribution, manufacturing and sales of building materials and component products) from 1997 to January 2010, director from 1991 to January 2010; former member of the board of directors of CalAtlantic Group, Inc. (national residential home builder) from October 2015 to February 2018, when CalAtlantic was acquired by Lennar Corporation; former member of the board of directors of the Ryland Group (national home builder, merged with another builder to form CalAtlantic) from 1999 to October 2015; and former member of the board of directors of Stock Building Supply Holdings, Inc. (lumber and building materials distributor) from March 2010 until December 2015 when it merged with another company. He was named a 2020 National Association of Corporate Directors Directorship 100 honoree.

Marilyn Schonberner – Ms. Schonberner has over 35 years of international experience in the energy and mining sectors. She served as Chief Financial Officer of Nexen Energy ULC until her retirement in 2018. During her 21-year career with Nexen, she held various executive roles with responsibility for financial and risk management, audit, human resources, strategic planning and budgeting, supply chain, and information services. Ms. Schonberner currently serves on the Board of Directors of Wheaton Precious Metals Corporation, the Advisory Board of Heritage Royalty, and is an Executive Committee member of the Calgary Chapter of the Institute of Corporate Directors. Previously, Ms. Schonberner served on the board of New Gold Inc., where she was also the Chair of the Audit Committee. Ms. Schonberner holds a Bachelor of Commerce from the University of Alberta and a Master of Business Administration from the University of Calgary. She is a Certified Professional Accountant, Certified Management Accountant, and a Certified Internal Auditor. Ms. Schonberner completed the Senior Executive Development Programme at the London Business School and has obtained the ICD.D designation from the Institute of Corporate Directors.

Corporate Office	Coeur Mining, Inc. 200 S. Wacker Dr., Suite 2100 Chicago, IL 60606
Main Telephone	+1 (312) 489-5800
Stock Ticker	NYSE, TSX: CDE
Website	www.coeur.com
Contact	Jeff Wilhoit Senior Director, Investor Relations investors@coeur.com