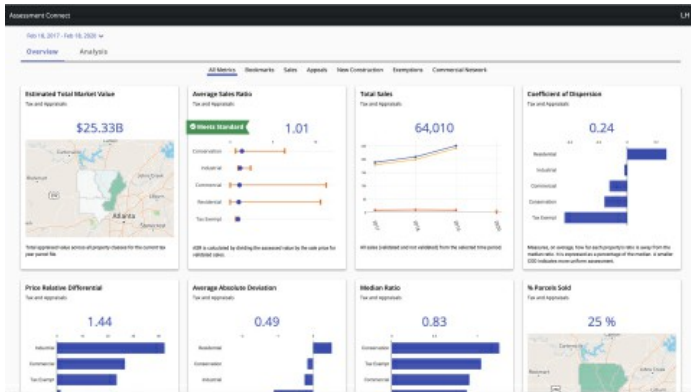


Tyler Technologies Launches Assessment Connect Solution

Solution provides assessor offices with unparalleled data access and analysis tools

PLANO, Texas - [Tyler Technologies, Inc.](https://www.tyler-tech.com) (NYSE: TYL) announced today it has launched [Assessment Connect™](https://www.businesswire.com/news/home/20200825005082/en/), a solution that provides county, municipal, and state assessing offices with data access and analysis tools to help ensure fair and equitable property valuations throughout their jurisdictions.

This press release features multimedia. View the full release here: <https://www.businesswire.com/news/home/20200825005082/en/>



Leveraging Tyler's more than 30 years of experience as a leader in computer-assisted mass appraisal (CAMA) operations in combination with its Socrata® data and insights platform, Assessment Connect transforms data into a strategic asset that is easily accessible via a secure web portal. The solution provides assessors with real-time data and insights into appraisals, appeals, property development efforts, and more.

"We know that assessors spend a lot of time working with data - combining datasets, searching for third-party data, and trying to generate insights," said Mark Hawkins, president of Tyler's Appraisal & Tax Division. "Tyler's Assessment Connect reduces this workload by creating connections to data sources across a variety of networks and eliminating data silos so that information is

Tyler's Assessment Connect provides assessor offices with unparalleled data access and analysis tools. (Graphic: Business Wire)

easily accessible and always current. Assessment Connect is the single source of truth for all data sources, improving accuracy and efficiency for assessors."

Assessment Connect allows assessing offices to view actionable insights quickly and easily from a shared network of data, simplifying reporting and enhancing decision making. Additional solution features include:

- Real-time data, which eliminates compartmentalized information and streamlines reporting
- Data aggregation, which improves appraisal accuracy, reduces appeals, and reduces data storage costs
- Real-time contextual maps, charts, reports, and dashboards
- Evidence-based metrics to improve oversight

In addition, Assessment Connect gives assessing offices access to a powerful peer-to-peer network, which offers a secure, private way for them to share data with other jurisdictions. Counties often have unique commercial or residential properties which can be difficult to value. And, county boundaries frequently intersect cities and school districts, making the analysis and aggregation of datasets challenging. With this solution, data can be collectively shared without the need for manual intervention. As a result, the data can make appraisals more reliable, reduce the possibility of appeals, and enhance decision making.

Tyler will be showcasing its Assessment Connect solution at the 2020 IAAO Annual conference, held virtually from August 30 - September 1. To register to attend a live demonstration at the conference, visit tylertech.com/iaao2020.

About Tyler Technologies, Inc.

Tyler Technologies (NYSE: TYL) provides integrated software and technology services to the public sector. Tyler's end-to-end solutions empower local, state, and federal government entities to operate more efficiently and connect more transparently with their constituents and with each other. By connecting data and processes across disparate systems, Tyler's solutions are transforming how clients gain actionable insights that solve problems in their communities. Tyler has more than 26,000 successful installations across more than 10,000 sites, with clients in all 50 states, Canada, the Caribbean, Australia, and other international locations. Tyler was named to Forbes' "Best Midsize Employers" list in 2019 and has been recognized three times on Forbes' "Most Innovative Growth Companies" list. More information about Tyler Technologies, an S&P 500 company headquartered in Plano, Texas, can be found at tylertech.com.

View source version on businesswire.com: <https://www.businesswire.com/news/home/20200825005082/en/>

Jennifer Kepler

Tyler Technologies

972.713.3770

Jennifer.Kepler@tylertech.com

8/25/2020 9:17:00 AM